

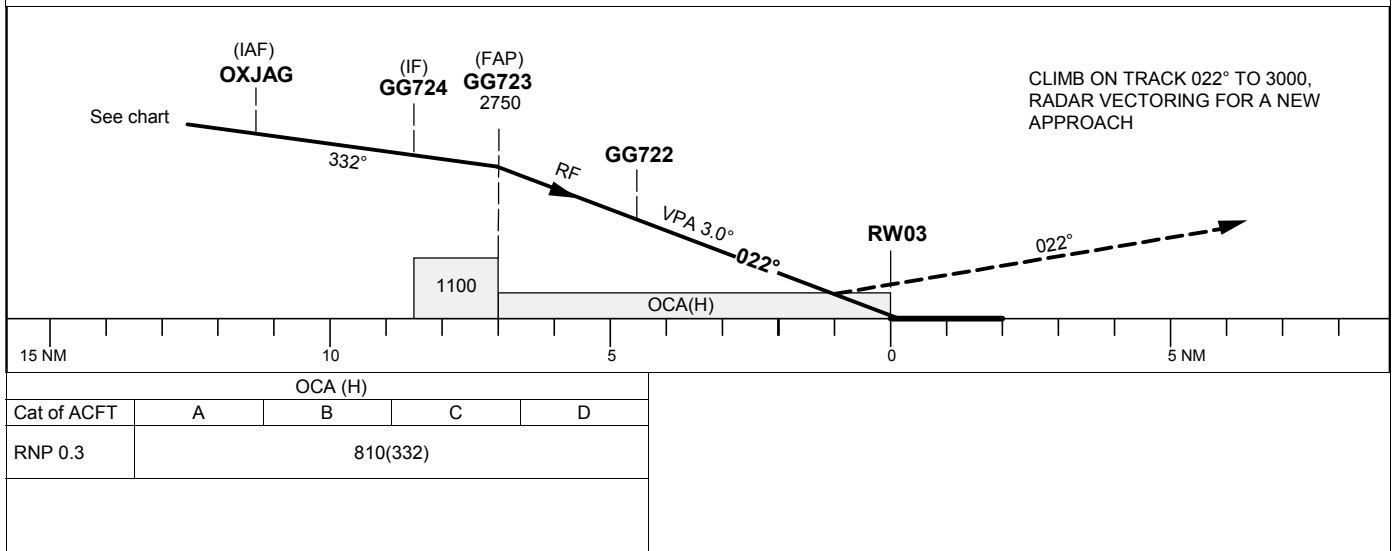
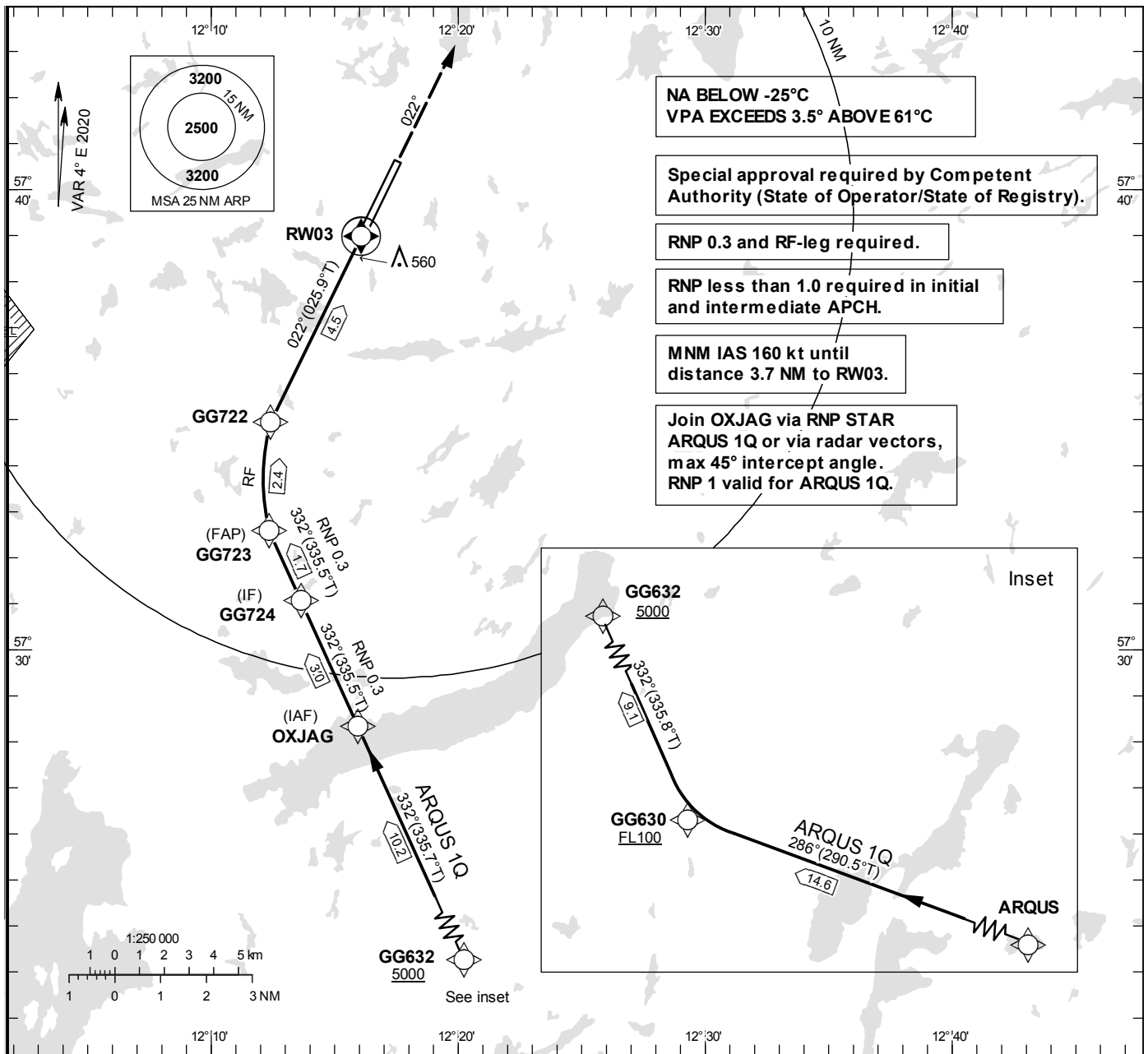
**GÖTEBORG/Landvetter**

**RNP y RWY 03 (AR)**

**INSTRUMENT  
APPROACH  
CHART – ICAO**

**THR ELEV 478.3 ft, AD ELEV 507 ft**  
OCH are related to THR.  
BRG are MAG (True).  
ALT, HGT and ELEV in ft.

LANDVETTER TOWER	118.605
LANDVETTER ATIS	118.380
GÖTEBORG APPROACH	124.680



CHANGE: Editorial

GÖTEBORG/Landvetter

RNP STAR RWY 03 – ARQUS 1Q

Path Term	Waypoint Identifier	Fly-over	Course °M(°T)	Dist (NM)	Turn Dir	Altitude	Speed (kts)	VPA/ RDH (°/ft)	Rec Navaid	Navigation Specification
IF	ARQUS	-	-	-	-	-	-	-	-	RNP 1.0
TF	GG630	-	286°(290.5°)	14.6	-	+FL100	-	-	-	RNP 1.0
TF	GG632	-	332°(335.8°)	9.1	-	+5000	-	-	-	RNP 1.0
TF	OXJAG	-	332°(335.7°)	10.2	-	-	-	-	-	RNP 1.0

WPT sequence:        ARQUS – GG630 (FL100 or above) – GG632 (5000 or above) – OXJAG.

RNP y RWY 03 (AR)

Path Term	Waypoint Identifier	Fly-over	Course °M(°T)	Dist (NM)	Turn Dir	Altitude	Speed (kts)	VPA/ RDH (°/ft)	ARC Radius NM	ARC centre	Navigation Spec
IF	OXJAG	-	-	-	-	-	-	-	-	-	RNP 0.3
TF	GG724	-	332° (335.5°)	3.0	-	-	-	-	-	-	RNP 0.3
TF	GG723	-	332° (335.5°)	1.7	-	@2750	-	-	-	-	RNP 0.3
RF	GG722	-	-	2.4	R	-	-	-3.00	2.769	GG997	RNP 0.3
TF	RW03	Y	022° (025.9°)	4.5	-	@532	-	-3.00/54	-	-	RNP 0.3
CA	-	-	022° (025.9°)	-	-	+3000	-	-	-	-	RNP APCH
VM	-	-	022°	-	-	@3000	-	-	-	-	RNP APCH